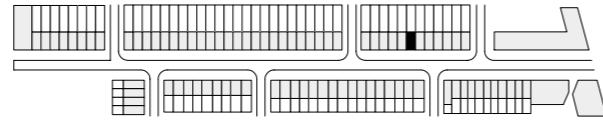


# House SW IJburg

House S/W is situated on Steigereiland, IJburg, the new extension area of the city of Amsterdam. The clients are a couple with 3 children.



situation  
N



## HOUSE SW

The house contains four floors and consists out of two parts, a living area and a sleeping area. In the living area, situated on the first two floors, family living is emphasized by visual connections and a void that guarantees contact between the members of the family. These family floors contain kitchen and play-room on the ground floor and a living room and music room on the first floor. Glass sliding doors offer the possibility to obtain more privacy. The second part of the house consists out of bedrooms, bathrooms and storage space. These two parts of the house are linked by a staircase which is treated as a recognizable object in the house. The staircase can be used for storing and exposing. On top of the house a roof terrace has been realised. It has high walls in order to gain privacy and shelter from the wind. A big window offers a view to the street.

The applied materials are pure and functional. Floors are finished in concrete and wood. The walls are plastered. The facade is composed of giant, wooden window frames apparently piled freely upon each other. These window frames are surrounded by red plaster.

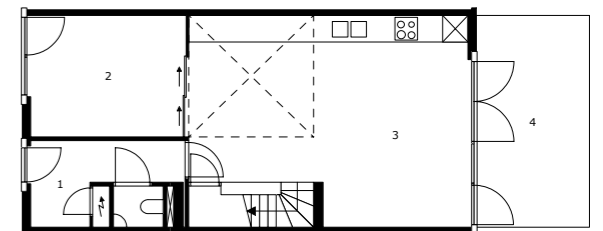
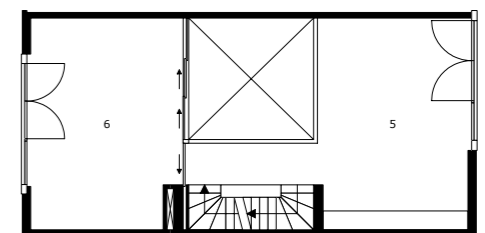
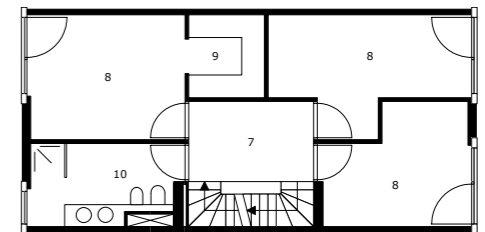
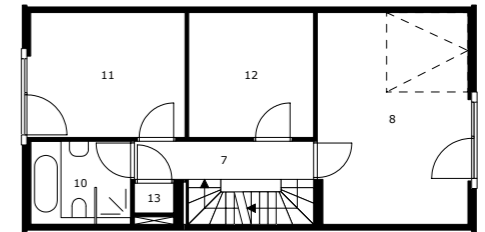
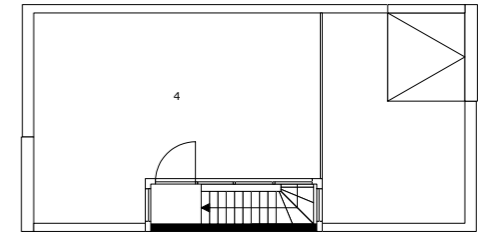
**PROJECT:** WOONHUIS IJBURG

**ADRES:** JOHAN OLPHERT VAILLANTLAAN 45

**OPDRACHTGEVER:** PARTICULIER

**PERIOD:** 2004 -2007

**TEAM:** MARCEL VAN DER LUBBE, JANNIE VINKE MET SANDER MONTEIRO



- 1 entrance hall
- 2 workspace
- 3 kitchen
- 4 terrace
- 5 living
- 6 hobby
- 7 hall
- 8 bedroom
- 9 walk in closet
- 10 bathroom
- 11 guest room
- 12 storage
- 13 laundry

